

## Selecting and Specifying Materials - A closer look at the details of making choices for materials and details that fit the design requirements.



**Stephanie Williams, NCIDQ, LEED GA**  
Interior Designer, Senior Associate at DLR Group

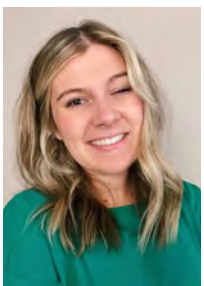
A licensed designer focused in the K-12 and Higher Education Studio, Stephanie works alongside Jill on DLR Group's Material R&D Baselines Initiative Team. Her passion lies in creating healthy interior spaces with a focus on biophilia. She believes the choices we make as designers have large impacts on our planet and our health and she strives to look at the two holistically when designing.



**Jill Maltby-Abbott, AIA, WELL AP, LFA**  
Architect, Senior Associate at DLR Group

A practicing architect in the Workplace studio, Jill leads materials optimization with DLR Group's large technology clients. Jill is also testing applications with DLR Group's R&D team across sectors, disciplines, and design phases to solve availability and process gaps with an integrated design lens.

## From Classroom to Career - Views from recent grad(s) on what it is like going from the life of a student to a practicing professional; insights and advice.



**Kaitlin Foley**  
Interior Designer at HOK

Kaitlin Foley graduated from the Kansas State Interior Design program in 2020. After graduating at such a challenging time in the world, she took the time to study for and pass the NCIDQ FX Exam. In March of 2021, she was hired by HOK at Washington DC office.



**Alyssa Garcia**  
Interior Designer at Gensler

Alyssa Garcia is a 2020 graduate of the Interior Design Program at Kansas State University. Alyssa now works as an Interior Designer in the Gensler New York City office where she primarily works on Financial Service Projects.



**Nina Finn**  
Interior Designer at BRR Arch.

After graduation, Nina Finn accepted a position at BRR Architecture in Overland Park, Kansas where she is a part of Whole Foods Market studio. She mainly works on remodel projects in the west coast and some larger projects in the Midwest region.



**Claire Guigli**  
Designer at McCarthy Nordburg

After graduating in 2021, Claire Guigli moved half way across the county and started working for McCarthy Nordburg in sunny Phoenix, Arizona. It is a full service interior architecture firm of 13 people that has been in the valley for 36 years. Focus is on tenant improvement offices, healthcare and retail projects.

## Designing for different sectors - Views from a professional who has worked with a variety of project types (e.g. hospitality, health care, education, retail, etc.).



**Gwen Morgan**  
Discipline Leader for Interior Design at Stantec

Gwen Morgan, 2007 K-State Interior Design graduate, is a Principal and the Discipline Leader for Interior Design at Stantec, a top tier global design and delivery firm comprised of designers, engineers, scientists, and project managers. In her role, Gwen is responsible for the stewardship of 250 plus interior designers across the Stantec community, including

North America, London, and Dubai. In her role, Gwen leads the design and technical excellence for the firm globally, guiding the Research and Benchmarking team for Furniture and the Interior Environment, implementing best practices and fresh ideas across multiple markets.

## What "else" can you do with a degree in Interior Design? - Career specializations that graduates of interior design programs have found rewarding.



**Aaron Westerman**

Occupancy Planner at Cushman & Wakefield

Aaron started out as an interior designer with Gensler in Houston, TX and after 2 years relocated to the Gensler office in San Francisco, CA. After 4 total years with Gensler Aaron started a job with Cushman & Wakefield working with Google at their Bay Area locations. He is now a strategic space planner partnering with their internal Real Estate and Workplace Services sector and the main point of contact.



**Darbie Winrick**

Space Planner/Designer at SICO

Darbie is a Space Planner at Sico Inc, a commercial furniture manufacturer. Before taking her current position, she spent years as a Playground Designer at Landscape Structures, a Playground Manufacturer. Working for a manufacturer requires in-depth product knowledge, efficient space planning, and the ability to forge strong relationships with external sales reps.



**Shelby Page**

Manager, Interior Designer at Textron Aviation

Shelby graduated from the KSU Interior Design program in 2015. Since that time, she has been designing private aircraft at Textron Aviation. The company is located in Wichita, Kansas, her hometown. Designing Beechcraft and Cessna products kicked off her career and she now manages the Interior Design department. In both roles, Shelby has been exposed to new product development, production aircraft, and aftermarket refurbishments.

## Work life balance - How can students establish behaviors as a student that can enhance the quality of a work-life balance as a career professional. And, how do career professionals keep this balance?



**Catie Shaffer, NCIDQ, IIDA, LEED AP**

Interior Designer at GLMV Architecture

Catie Shaffer is a NCIDQ licensed Interior Designer, LEED Accredited Professional, and 2008 graduate of Kansas State University. After graduation a job at GLMV Architecture where she quickly

found herself moving fluidly between interiors and architecture. Throughout her years at GLMV, Catie worked on a wide range of project types and teams. She quickly found a passion for serving

her community in educational, not-for-profit, and philanthropic work as it blends seamlessly her love of community service and design.

## How does credentialing impact your career? - How does credentialing impact your career? What do certifications (e.g., NCIDQ, WELL, LEED, EDAC, AAHID, CID, etc.) mean to practicing designers and when do you pursue different credentials?



**Emily M. Cochran, CID, LEED AP, IIDA**

Senior Interior Designer at JMT Architecture

Emily Cochran is a 2004 K-State graduate of the Interior Design program with a minor in business. Her practice experience is with multi-disciplinary architecture firms where she has worked on both large-scale and small-scale projects. She is an active NCIDQ certificate holder and a Certified Interior Designer in the state of Maryland.



**Kaitlin Jones, RID, NCIDQ, WELL AP**

Senior Associate, Interior Designer at Page

After graduating from Kansas State University with a degree in Interior Design, Kaitlin spent the next several years immersed in multifamily and high end residential design. She came to Page as an experienced project manager who is adept in quickly adapting to the fast-paced evolution of industries like multifamily housing.



**Krystal Gantz Fensky, NCIDQ, EDAC, IIDA**

Associate, Interior Designer at ACI Boland Arch.

Krystal Gantz Fensky is a 2013 graduate of the Interior Design program at Kansas State University. She works at an architecture and planning firm where she has practice experience across diverse market sectors, working on both large-scale multi-year projects, and small tenant lease spaces. She applies her professional design expertise to a wide range of healthcare projects.

**How to find a job/ internship (in a continued pandemic market) -** What is it like out there in the job market for interior designers. What should students know as they pursue positions?



**Rachel Hewitt**

Market Development, Real Estate at Scott Rice Office Works

Rachel has served the interior design industry since graduating from K-State in 2015. Since then, she has worked in varying capacities ranging from a practicing interior designer, to client relations, strategic marketing, and business development. Rachel's experience in supporting building projects of all types has evolved into her current role in business development for Scott Rice Office Works, a leading Steelcase dealer in Kansas City. Rachel specifically supports the company's engagement within the commercial real estate industry. She works closely with real estate developers, owners, leasing agents, and property managers, as well as design and construction teams, to execute workplace projects that enhance building performance, building lease-up, and end user employee experience. Rachel is passionate about women's professional development in the male-dominated building industry, and currently serves as the Board Chair for CoreNet Global's Kansas City Chapter, focused on serving the corporate real estate profession in Kansas City.

**Mistakes make it Real -** How to professionally handle mistakes that happen on the job and understanding that "it happens" – it's how you deal with it that matters.



**Lauren Tines, NCIDQ, WELL AP**

Interior Designer and R&D Coordinator at StudioSIX5

Lauren Koepf Tines is an Interior Designer and a specialist in senior living environments. After graduating Kansas State University in 2013 with a B.S. in Interior Design and a secondary degree in gerontology, Lauren settled in Austin, TX and began working at StudioSIX5, where she designs experiential environments that are aesthetically pleasing, supportive and functional. Here, she founded the firm's Research and Development Team to push the senior design industry towards new innovations. Her leadership at StudioSIX5 has also earned the title of Associate. Lauren's dedication to her field has led to her membership into SAGE, and certifications in NCIDQ and WELL AP. Lauren is passionate about sharing the knowledge she has acquired throughout her career, and she takes every chance she gets to mentor others around her whether it be a teammate at StudioSIX5, a high school student shadowing her, or college students. Lauren attributes her commitment to mentorship to those who have impacted her over the years, at K-State and beyond.

**Working internationally -** Views from a professional who has worked and lived in another country. What is it like to practice in another part of the world?



**Haley Van Wagenen, LEED AP BD+C, WELL AP**

Workplace Strategist at EY

Haley is a workplace strategist in EY's corporate real estate practice. She supports clients on a variety of initiatives including the adoption and implementation of activity-based working, return to office and hybrid work strategies, and change management. Prior to joining EY, she spent 13 years at Skidmore, Owings & Merrill (SOM), where she worked on all phases of design from early-stage programming and space planning to furniture specification and construction documentation. During her career, Haley has worked on projects across North America, Europe, the Middle East and Asia in various sectors, including financial services, international, federal, and municipal government organizations, and technology.

Haley is a Certified Interior Designer in New York State, LEED AP BD+C and WELL AP. She holds an MS in Historic Preservation from the University of Pennsylvania and a BS in Interior Design from Kansas State University ('08). She currently resides in Chicago, IL.